



## **Stronger Together: Building Monitoring Networks in the Chesapeake Bay Watershed**

**Chesapeake Monitoring Cooperative Leadership Team:**

Anne Dunckel, Lea Rubin, Danielle Donkersloot, Julie Vastine,  
Caroline Donovan and Nissa Dean



# Conodoguinet Bay Task Force



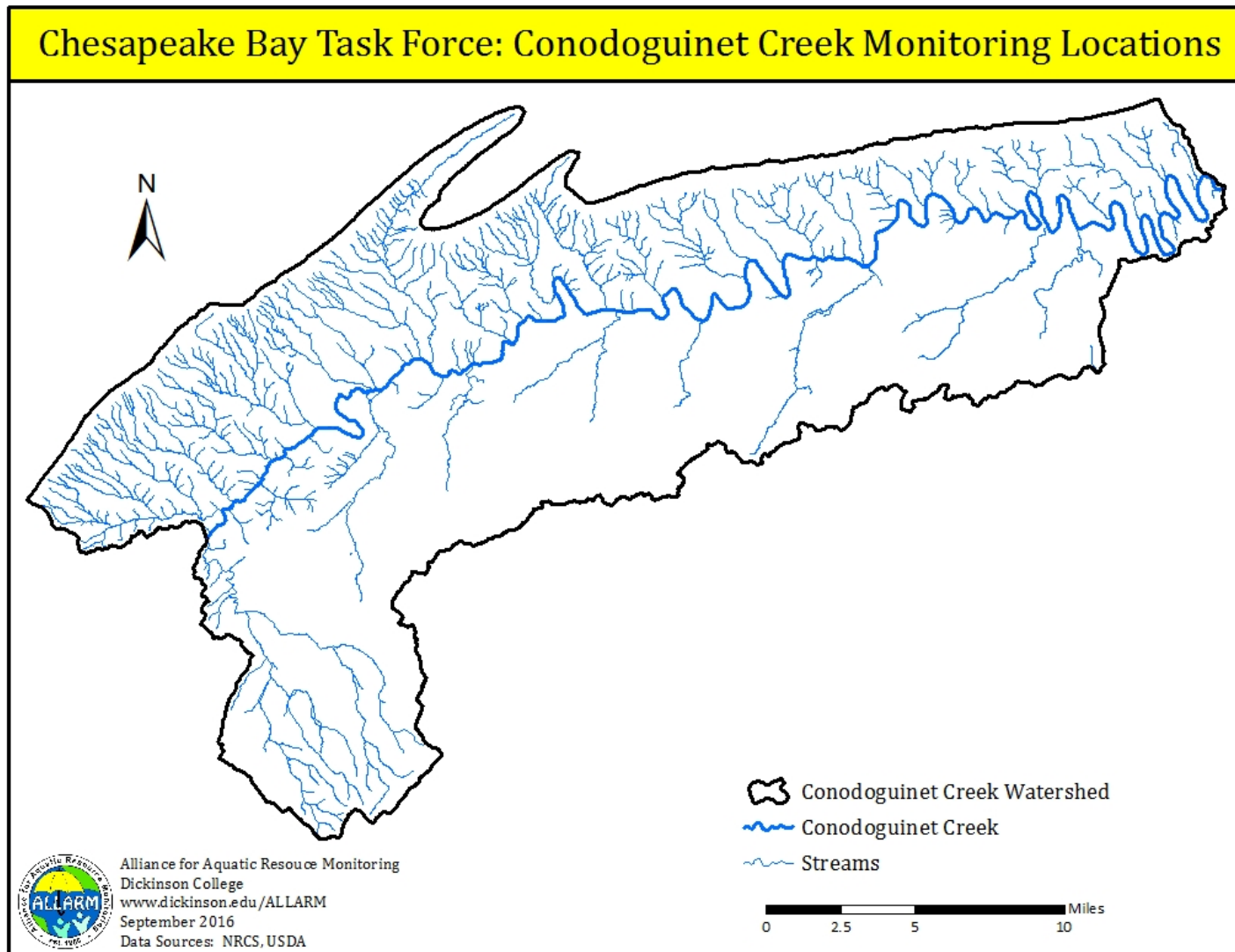


# What data do you need?

- Parameters
- # of sampling sites
- Location of sites
- Sampling frequency

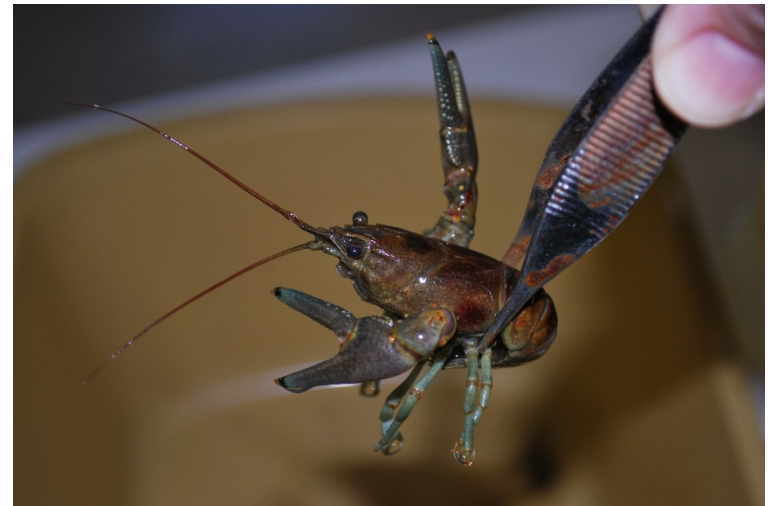


# Conodoguinet Watershed (Flow →)



# Data Criteria

- Nutrients (Nitrate-Nitrogen & Orthophosphate)
- Turbidity/water clarity/ total suspended solids
- Dissolved oxygen
- Temperature
- Minimum #: 1 site
- Location (minimum mouth of creek, main stem and tributaries)
- Frequency – minimum monthly



# Activity- Form teams of 3, open your envelopes

- Directions
- 3 monitoring entities
- Baseball card with monitoring stats
- Corresponding site map
- Watershed map

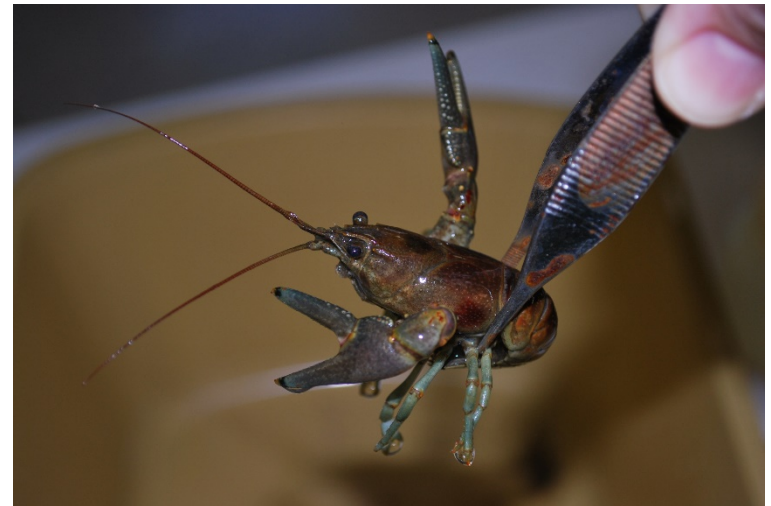
For you to keep:

- Pens
- Stickers



# Data Criteria

- Nutrients (Nitrate-Nitrogen & Orthophosphate)
- Turbidity/water clarity/ total suspended solids
- Dissolved oxygen
- Temperature
- Minimum #: 1 site
- Location (minimum mouth of creek, main stem and tributaries)
- Frequency – minimum monthly





# Wrap Up!

What did we learn?

- Pros & Cons – individual entity
- Pros & Cons – grouped together
- Data overlaps?

Keep:

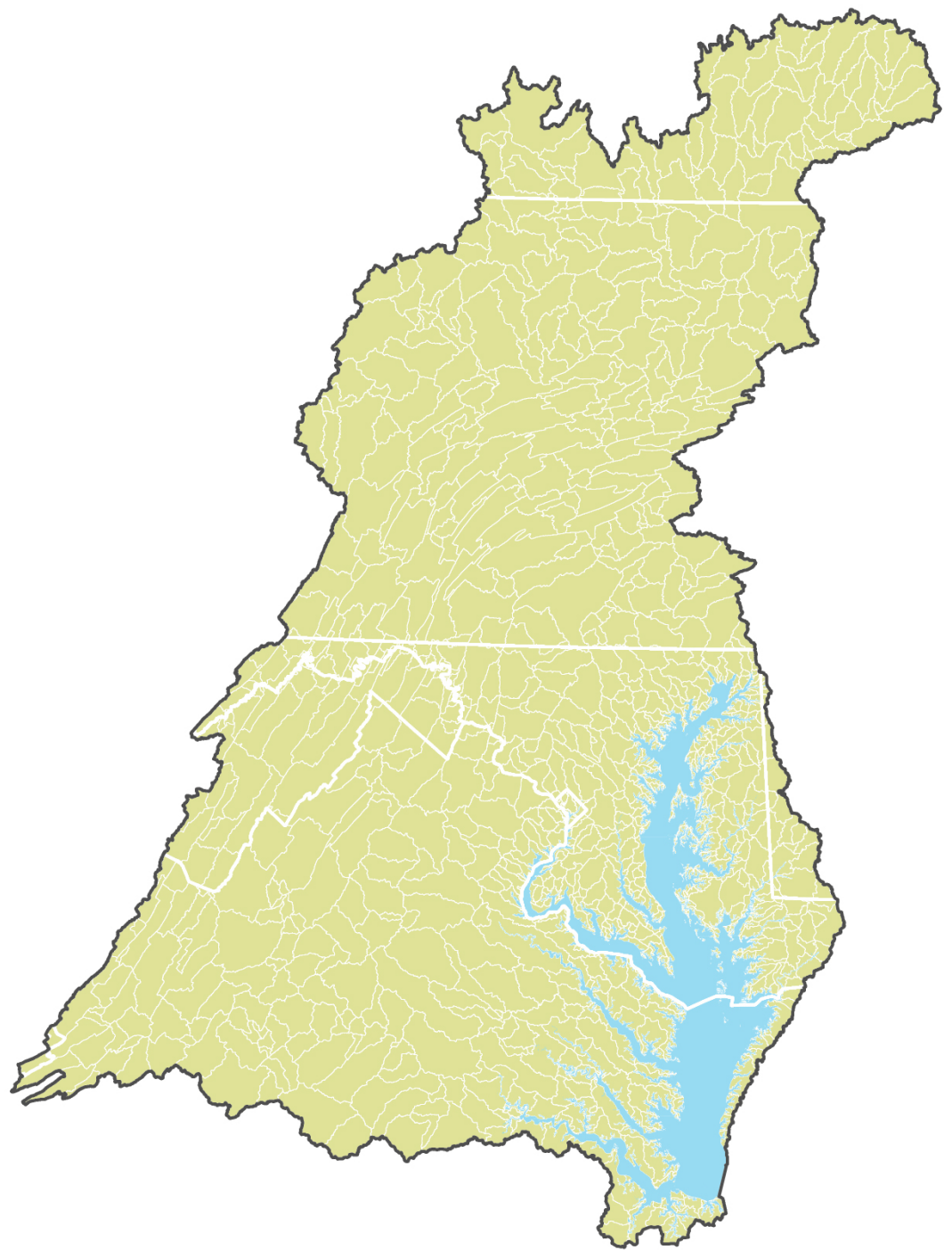
- Stickers & pens

Return:

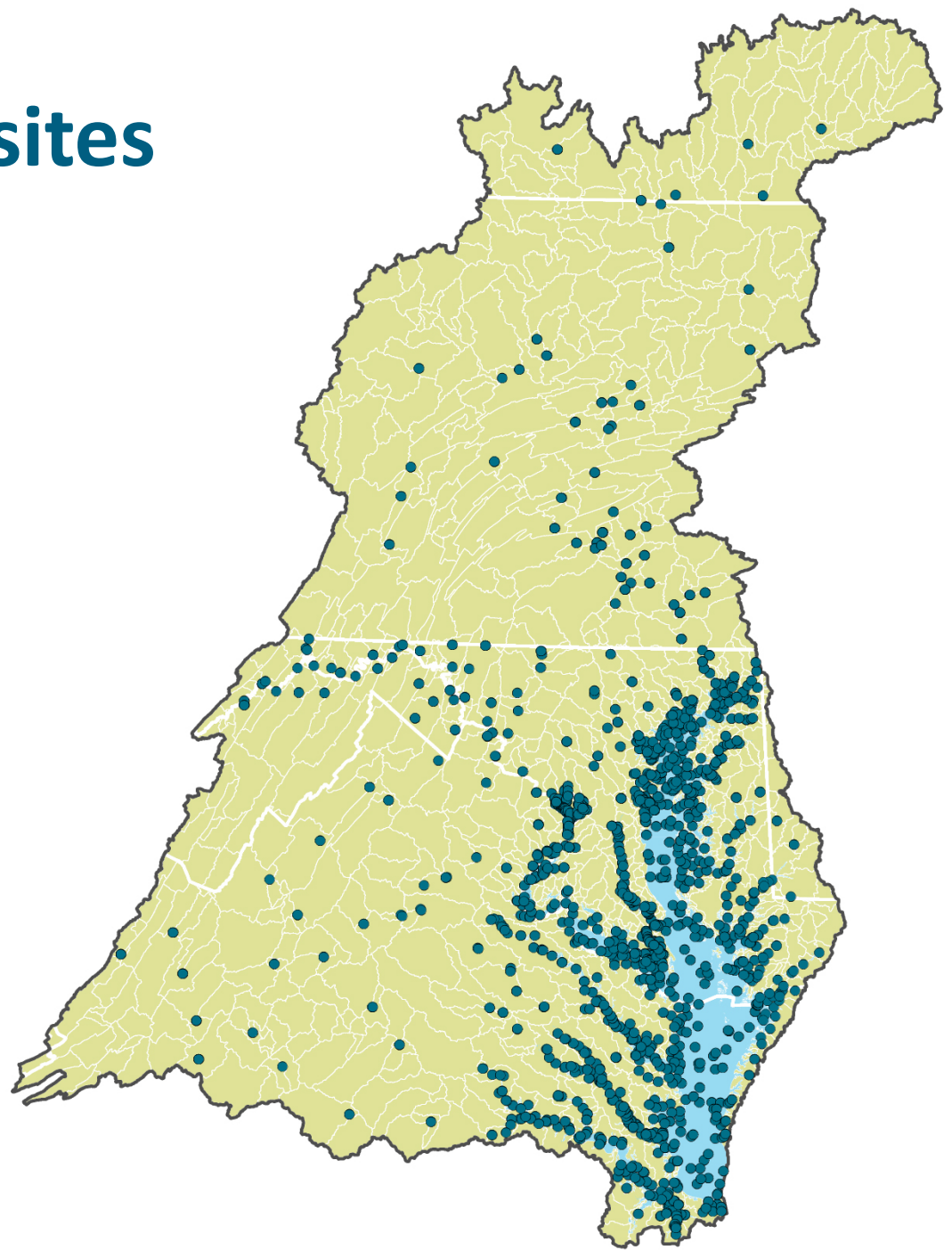
- Envelops with transparencies and maps.



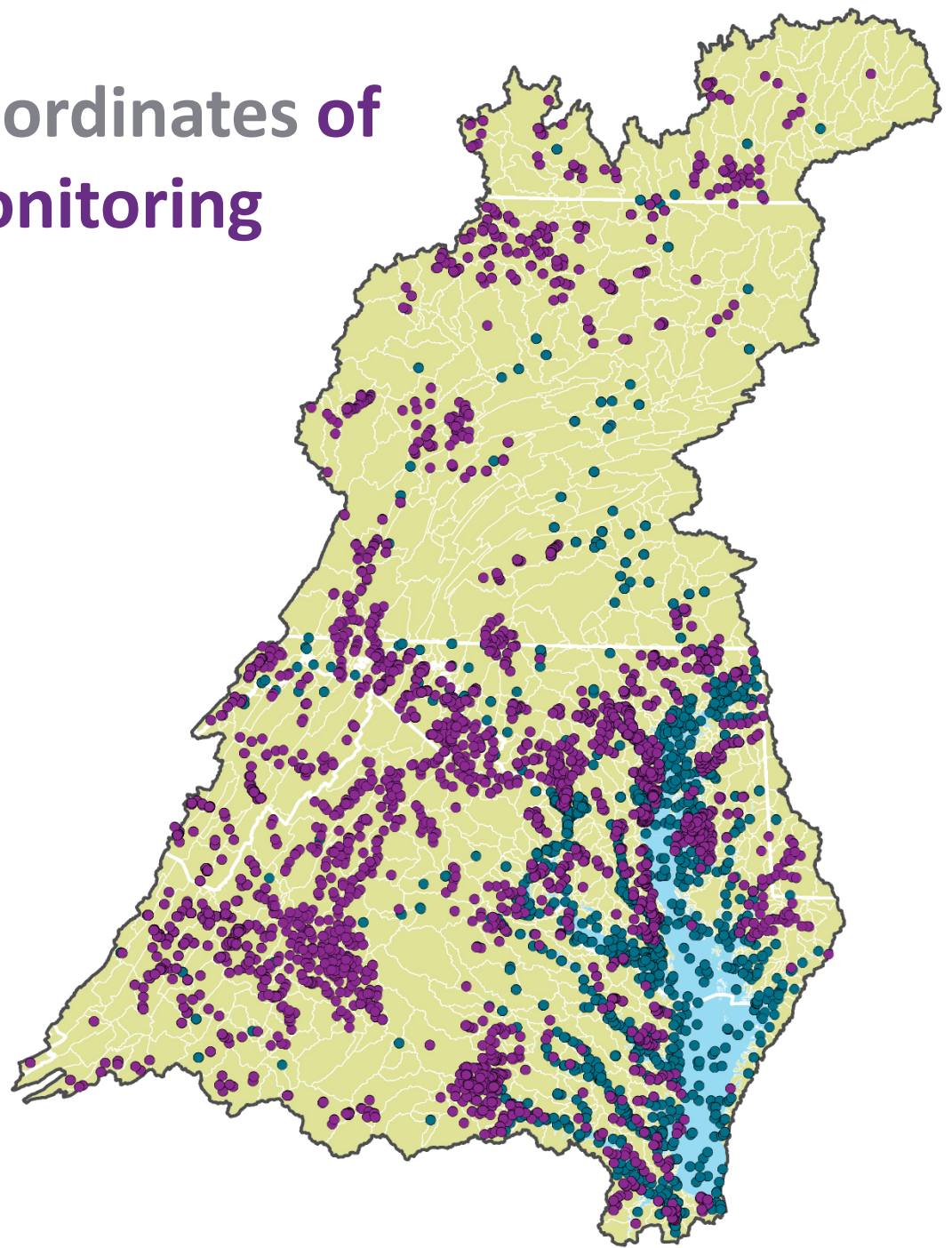




# CBP monitoring sites



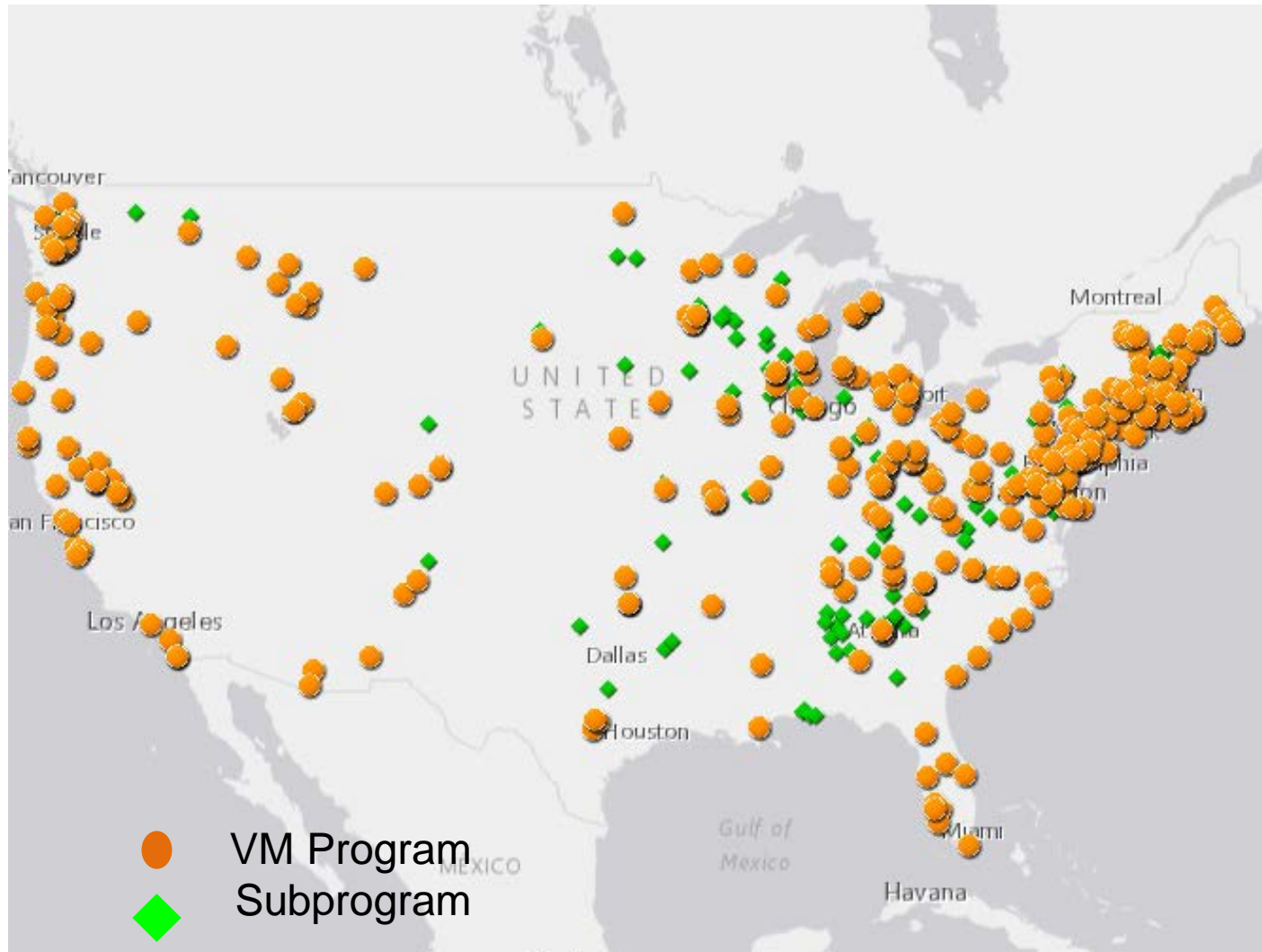
# Preliminary site coordinates of non-traditional monitoring







# Nationwide Volunteer Monitoring





# Vision

Chesapeake Monitoring Cooperative envisions a Chesapeake community where all data of known quality are used to inform watershed management decisions and restoration efforts.



Photo courtesy of the Chesapeake Bay Program



# Mission

Chesapeake Monitoring Cooperative works with diverse partners to collect and share new and existing water quality data. Through this collaboration, we aim to develop a comprehensive understanding of Chesapeake Bay Watershed health.



Photo courtesy of the Chesapeake Bay Program

# CMC

## Chesapeake Monitoring Cooperative



## Diverse Monitoring Groups

water

health

watershed

data

baseline

stream

restoration

monitor

conditions

local

river

public

creek

impacts

assess

resources

part

or

efforts

bay



# Needs within the Chesapeake Bay Watershed to Make this Happen



Photo courtesy of the Chesapeake Bay Program

**Comparability**

**Quality Assurance**

**Technical Support**

**Share Data**

**Collaboration**

[Chesapeakemonitoringcoop.org](http://Chesapeakemonitoringcoop.org)



# Needs within the Chesapeake Bay Watershed to Make this Happen



Photo courtesy of the Chesapeake Bay Program

**Comparability**

Quality Assurance

Technical Support

Share Data

Collaboration

[Chesapeakemonitoringcoop.org](http://Chesapeakemonitoringcoop.org)

# Needs within the Chesapeake Bay Watershed to Make this Happen



Photo courtesy of the Chesapeake Bay Program

Comparability

**Quality Assurance**

Technical Support

Share Data

Collaboration

[Chesapeakemonitoringcoop.org](http://Chesapeakemonitoringcoop.org)



# Needs within the Chesapeake Bay Watershed to Make this Happen



Photo courtesy of the Chesapeake Bay Program

Comparability

Quality Assurance

**Technical Support**

Share Data

Collaboration

[Chesapeakemonitoringcoop.org](http://Chesapeakemonitoringcoop.org)

# Needs within the Chesapeake Bay Watershed to Make this Happen



Photo courtesy of the Chesapeake Bay Program

Comparability

Quality Assurance

Technical Support

**Share Data**

Collaboration

[Chesapeakemonitoringcoop.org](http://Chesapeakemonitoringcoop.org)



# Needs within the Chesapeake Bay Watershed to Make this Happen



Photo courtesy of the Chesapeake Bay Program

Comparability

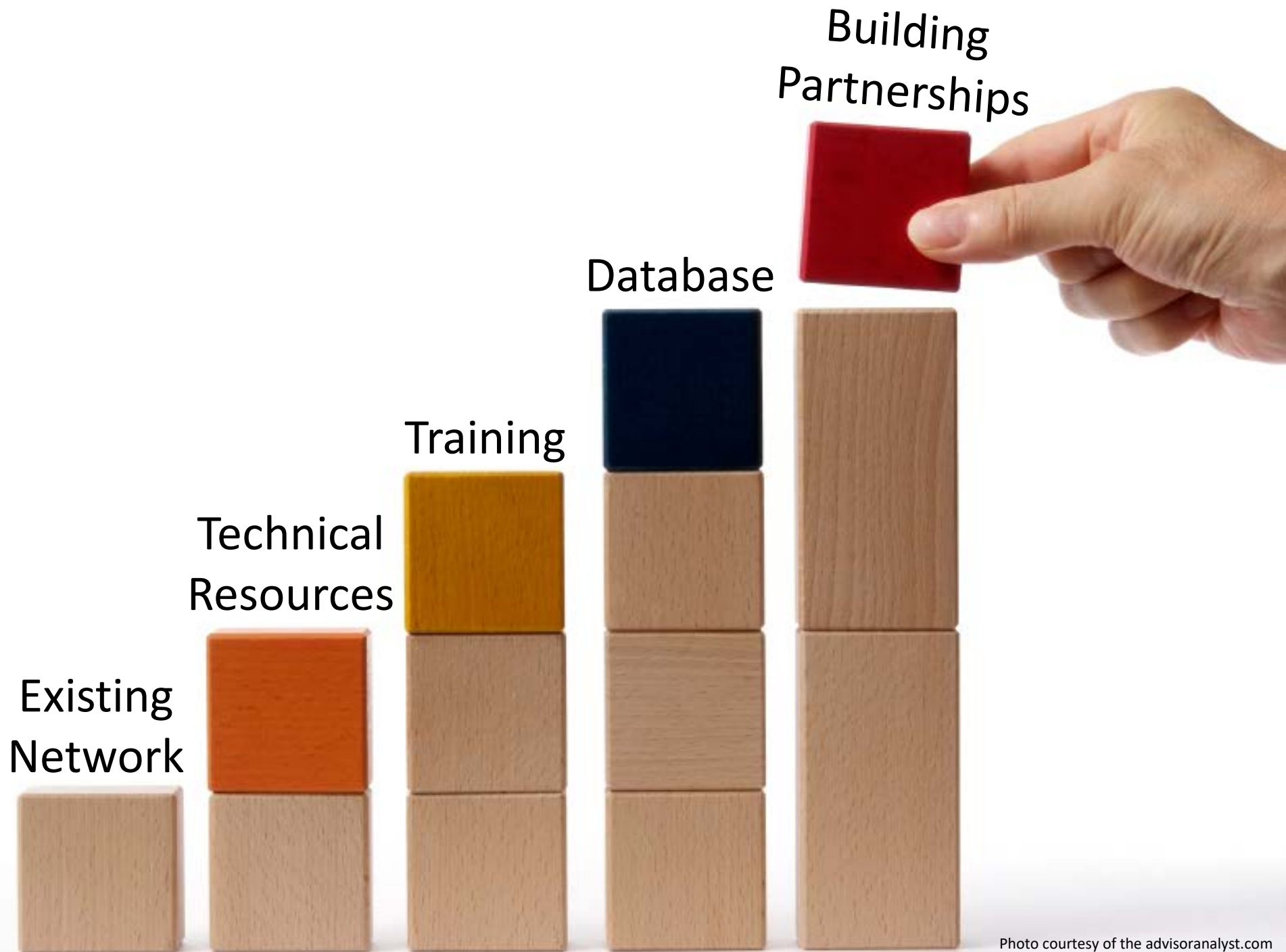
Quality Assurance

Technical Support

Share Data

**Collaboration**





# How do you get involved?

## ChesapeakeMonitoringCoop.org



# Contact Us!



**Lea Rubin**  
**Project Coordinator**  
Izaak Walton League  
[lrubin@iwla.org](mailto:lrubin@iwla.org)



**Nissa Dean**  
**Project Advisor**  
Alliance for the Chesapeake Bay  
[ndeane@allianceforthebay.org](mailto:ndeane@allianceforthebay.org)



Sign up for our Newsletter @

[www.ChesapeakeMonitoringCoop.org](http://www.ChesapeakeMonitoringCoop.org)